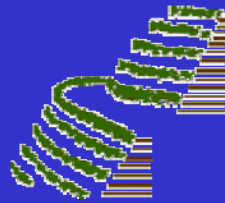


**BEAUDESERT LANDCARE
GULLY STABILISATION PROJECT
CRYNA ROAD**



Dr. Paul Truong

Veticon Consulting

www.uqconnect.net/veticon

Brisbane, Australia.

All materials in this document remain the property of Veticon Consulting Pty Ltd. Permission must be obtained for their use. Copyright © 2003



**A very deep and
narrow gully on a
highly erodible
loamy soil**



**Looking up, gully
head with vertical
drop of 6m**





**Looking down
toward the creek**

Looking down from from gully head



23 5 2002

Looking down toward creek from 30m upstream



21 11 2002

Looking down toward gully head



12 12 2002



Earthwork reducing gully head to 3:1 slope



12 12 2002



12 12 2002



**Cover with open
jute mesh
geofabrics**

12 12 2002



12 12 2002



12 12 2002

Planting on contour line above gully head



14 12 2002

Planting across batter at 1m VI





14 12 2002

Covered with straw to reduce evaporation



14 12 2002



Looking down



14 12 2002



14 12 2002



30 12 2002

Looking up



14 12 2002



Side slope was seeded, fertilised and covered with jute mesh





14 12 2002



14 12 2002

One week after planting



20 12 2002



**One week
after planting**





With good watering, new growth up to 15cm after two weeks





3 weeks later





7 1 2003

5 weeks later





7 weeks later









7 2 2003

2 months later









**2 months
later, 1.2m tall**

21 2 2013

3.5 months later







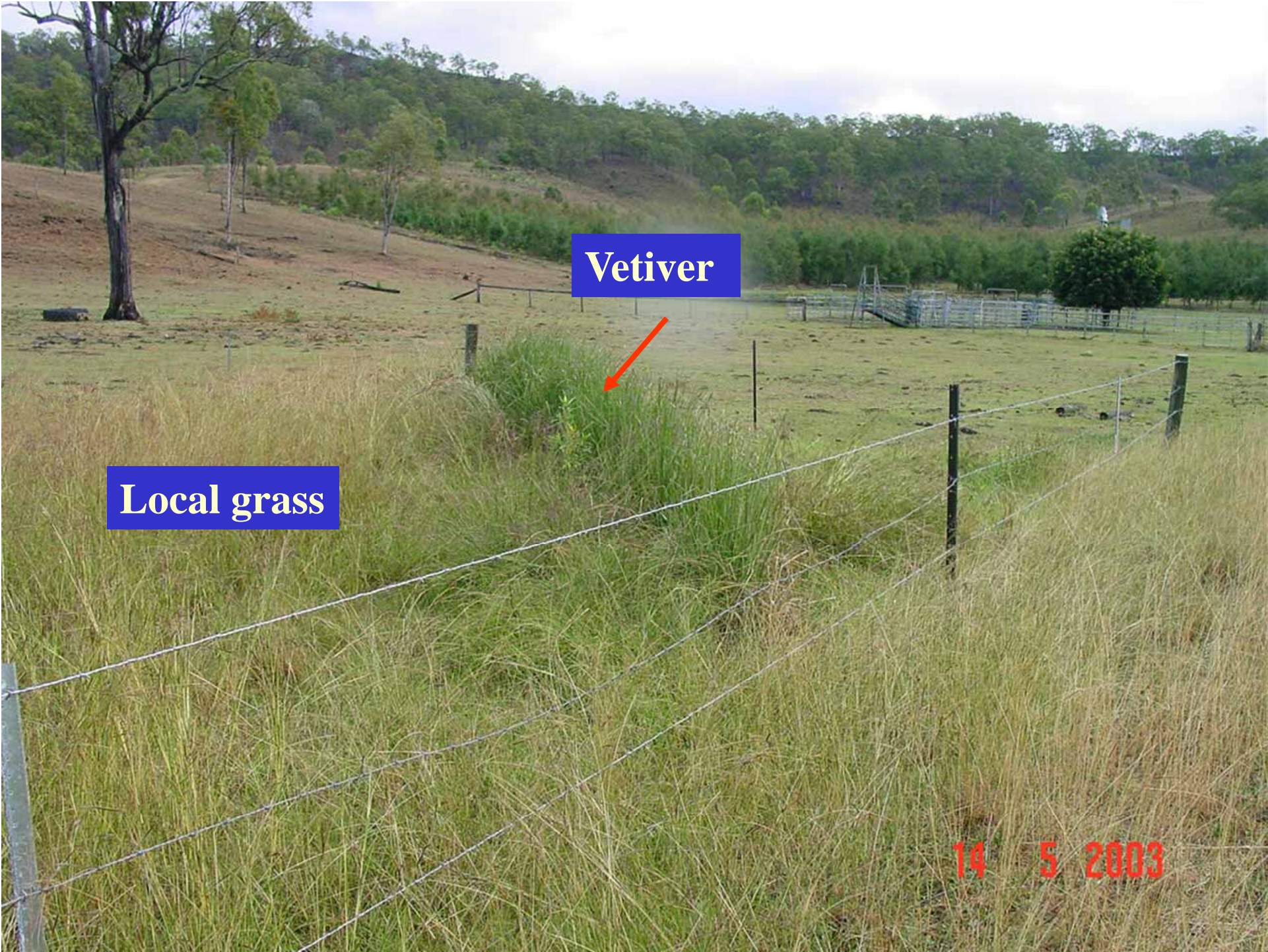
26 3 2003



26 3 2003

5 months later



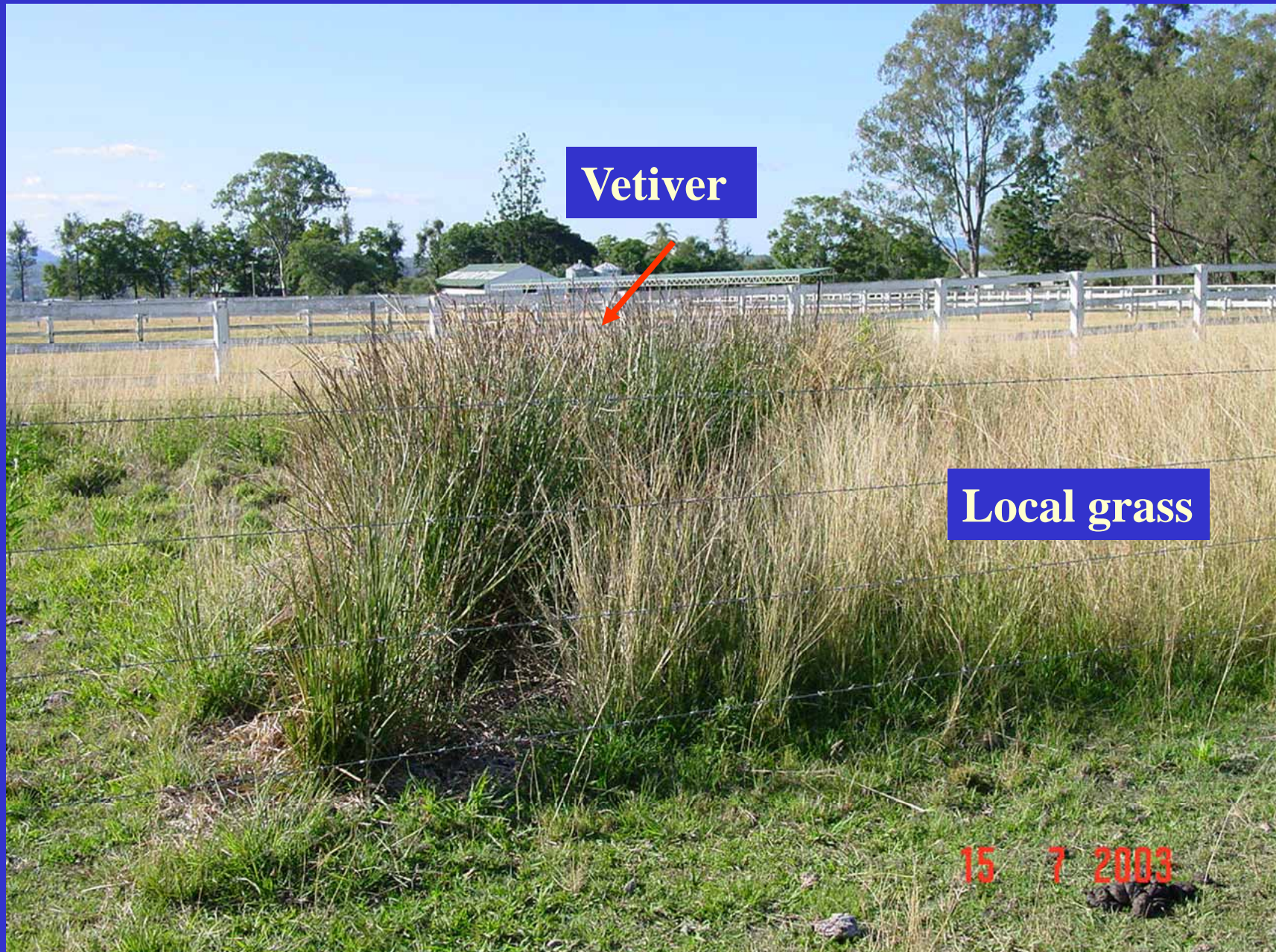


Local grass

Vetiver

14 5 2003

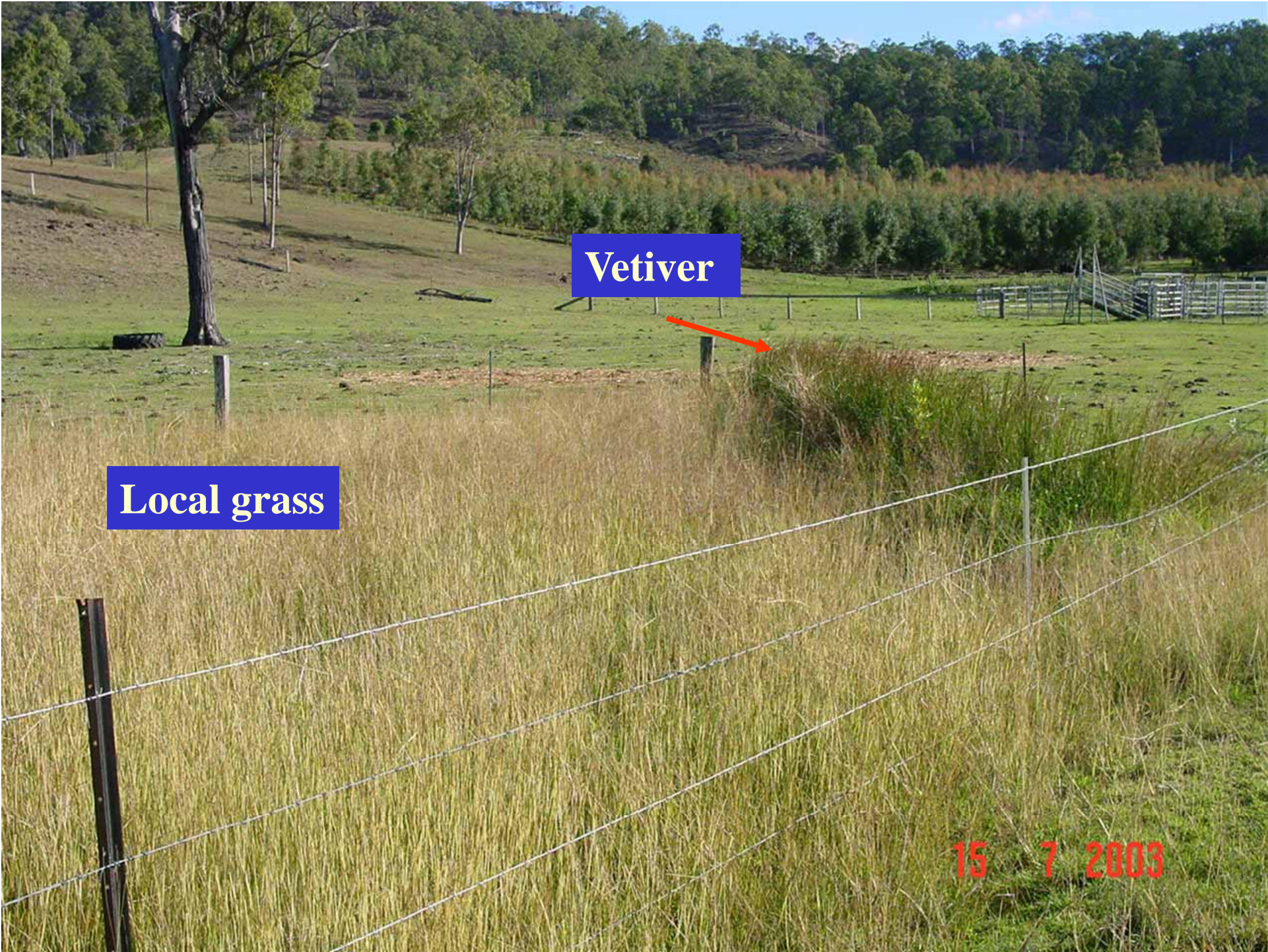
6 months later



Vetiver

Local grass

15 7 2003



Vetiver

Local grass

15 7 2003



**Looking down
from the top end**

15 7 2003



15 7 2003

6 months later, return of local tree species





One year later
Following a
severe storm of
120mm in 1.5
hour



No Erosion:
Vetiver was
flattened but
holding firm